



PRODUCT CATALOG



ABOUT US



Everything starts somewhere, here is our story.

Roofivent was founded when two men shared their passion to achieve one goal, to bring an innovative, technologically sophisticated and advanced product to the US market. Combining the know-how of production, with our highly successful European business Krono-Plast, and our partner that specialized in all types of roofing, to bring you the best sales service and job execution.

Our vision is to provide you with the highest quality and innovative products. During development, we emphasize long-term product reliability and very easy installation. All this with unrivaled customer service, after sales service and support.

Our products speak for themselves, and we are confident that after you have experienced our service, you will too.



We use the highest proved quality materials. Resistant to UV and weather conditions.



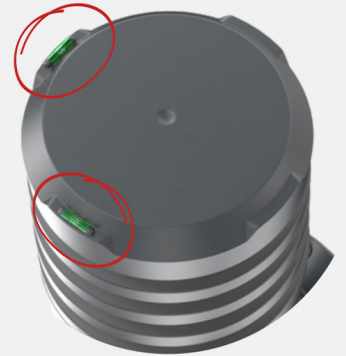
We provide technical support and professional product advice.



Shipment of orders up to two working days from the moment of placing the order.

High quality and innovative design vent

Built in bubble levels ensure precise vertical positioning on install, saving time and money. Our condensation drain system protects the unit from moisture and frost, keeping it dry year around. Available in variety of colors to look perfect on any roof and suitable for existing 5" or 6" systems.



RINGS

maximize free air flow and protects against rain, back drafts, leaves and other debris.

BUBBLE LEVELS

built in bubble levels ensure precise vertical positioning on install.

CONDENSATION DRAIN SYSTEM

this innovative feature protects against moisture inside the system, which also prevents freezing in colder climates.

REGULATION

easy adjustment of the vertical vent to the angle of the roof. range: 5-45°



BASES

suitable for most roof types, including slate, shingle and standing seam roofs. The vent base for the standing seam is prepared including butyl sealant.



CONDENSATION COLLECTOR

minimize the risk of entering condensation to ventilation system.

EXHAUST PIPE

the perpendicular placed element that sits with the slope of the roof, provides an easy click connection with the iFLEX pipe.

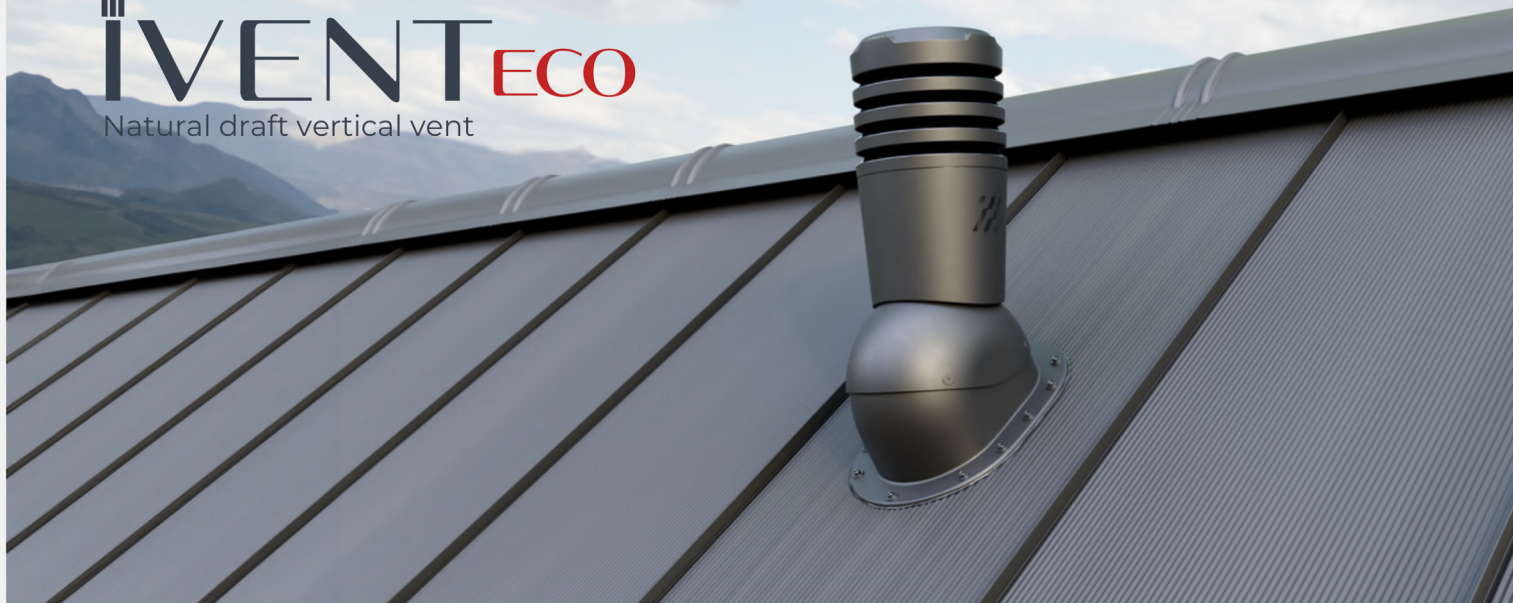
iFLEX CONNECTION PIPE

system accessorie, ensure easy and tight connection of vertical vent and ventilation system, has multiple reduction pyramid from 5" or 6" to 4" and 3".



iVENTECO

Natural draft vertical vent



TECHNICAL DATA:

DIAMETER: 5" / 6"

HEIGHT: 16"

MATERIAL: high quality polypropylene
UV resistant

WEIGHT: 4 lbs

REGULATION: 5° - 45°

INSULATION: no insulated, built in
condensation drainage
system

SET CONTAINS:

- iVENTeco vertical vent
- base
- exhaust pipe
- set of screws
- installation instructions



COLORS, PRODUCT CODES AND BASES VARIANTS:

SHINGLE ,SLATE, WOODEN SHAKES ROOFS

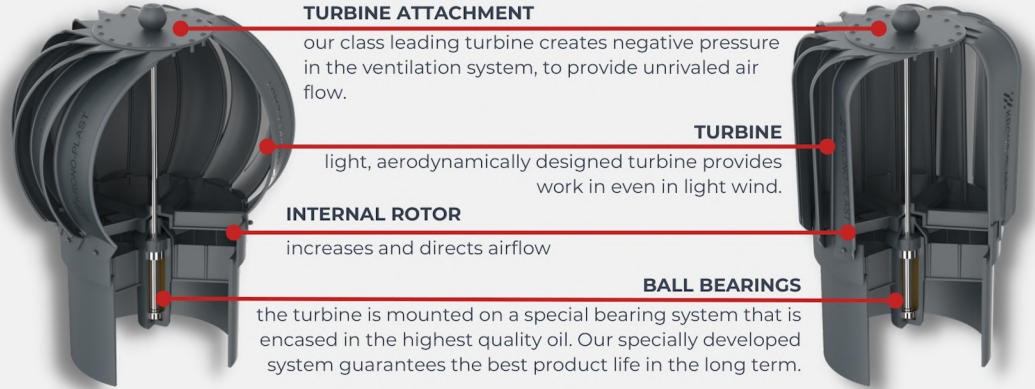
	1-BROWN	2-BLACK	6-CLAY	9-GRAPHITE	10-GREY
					
5"	EL-5-01-PG	EL-5-02-PG	EL-5-06-PG	EL-5-09-PG	EL-5-10-PG
6"	EL-6-01-PG	EL-6-02-PG	EL-6-06-PG	EL-6-09-PG	EL-6-10-PG

STANDING SEAM ROOFS

	1-BROWN	2-BLACK	6-CLAY	9-GRAPHITE	10-GREY
					
5"	EL-5-01-PI	EL-5-02-PI	EL-5-06-PI	EL-5-09-PI	EL-5-10-PI
6"	EL-6-01-PI	EL-6-02-PI	EL-6-06-PI	EL-6-09-PI	EL-6-10-PI

Unique polypropylen turbine vertical system

This wind powered turbine is designed to negate pressure in the ventilation system to maximize air flow.



TURBINE ATTACHMENT

our class leading turbine creates negative pressure in the ventilation system, to provide unrivaled air flow.

TURBINE

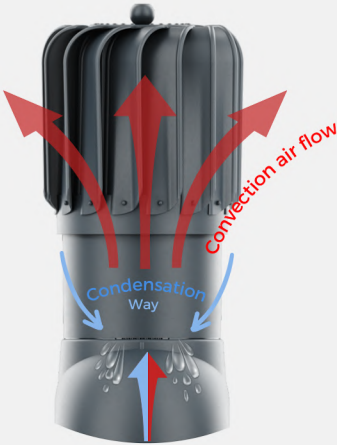
light, aerodynamically designed turbine provides work in even in light wind.

INTERNAL ROTOR

increases and directs airflow

BALL BEARINGS

the turbine is mounted on a special bearing system that is encased in the highest quality oil. Our specially developed system guarantees the best product life in the long term.



CONDENSATION DRAIN SYSTEM

this innovative feature protects against moisture inside the system, which also prevents freezing in colder climates.

TURBINE HEAD

wind generates movement of the turbine, which in turn maximizes air flow in the ventilation system and reduces back flow. Built in bubble levels ensure precise vertical positioning on install.

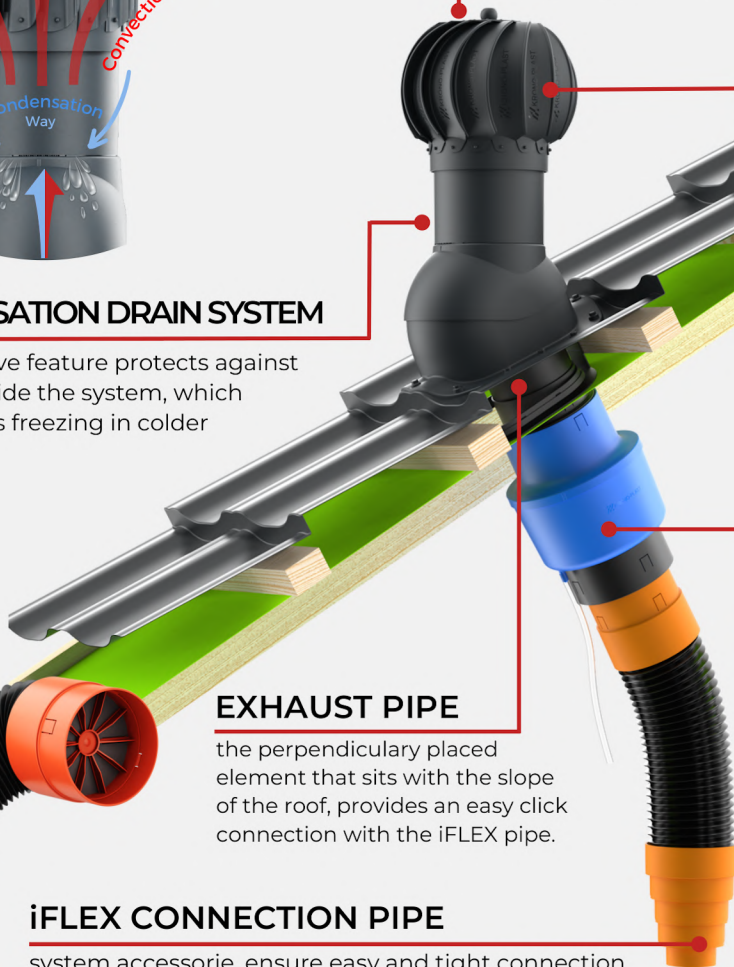
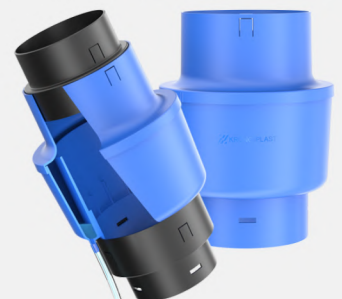
TWO SHAPES OF THE TURBINE HEAD

based on the specification the customer or the designer chose from either round or oblong shapes.



CONDENSATION COLLECTOR

minimize the risk of entering condensation to ventilation system.



EXHAUST PIPE

the perpendiculary placed element that sits with the slope of the roof, provides an easy click connection with the iFLEX pipe.

iFLEX CONNECTION PIPE

system accessorie, ensure easy and tight connection of vertical vent and ventilation system, has multiple reduction pyramid from 5" or 6" to 4" and 3".

iVENTROTO

Vertical turbine vent



TECHNICAL DATA:

DIAMETER: 6"

HEIGHT: 16"

MATERIAL: high quality polypropylene
UV resistant

WEIGHT: 5 lbs

REGULATION: 5°- 45°

BEARING: double ball bearing, encased in high quality oil

SET CONTAINS:

- iVENTroto vertical vent
- base
- exhaust pipe
- set of screws
- installation instructions



COLORS, PRODUCT CODES AND BASES VARIANTS:

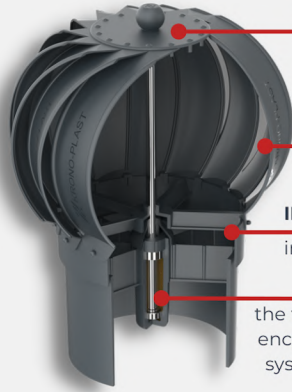
SHINGLE ,SLATE, WOODEN SHAKES ROOFS

	1-BROWN	2-BLACK	6-CLAY	9-GRAPHITE	10-GREY
	RPL-6-01-PG	RPL-6-02-PG	RPL-6-06-PG	RPL-6-09-PG	RPL-6-10-PG
	RLK-6-01-PG	RLK-6-02-PG	RLK-6-06-PG	RLK-6-09-PG	RLK-6-10-PG

STANDING SEAM ROOFS

	1-BROWN	2-BLACK	6-CLAY	9-GRAPHITE	10-GREY
	RPL-6-01-PI	RPL-6-02-PI	RPL-6-06-PI	RPL-6-09-PI	RPL-6-10-PI
	RLK-6-01-PI	RLK-6-02-PI	RLK-6-06-PI	RLK-6-09-PI	RLK-6-10-PI

ivent TURBO systems are designed, and available in all different shapes, sizes and colors to fit perfectly with prepared ventilation systems.



TURBINE ATTACHMENT

our class leading turbine creates negative pressure in the ventilation system, to provide unrivaled air flow.

TURBINE

light, aerodynamically designed turbine provides draft in even in light wind.

INTERNAL ROTOR

increases and directs airflow

BALL BEARINGS

the turbine is mounted on a special bearing system that is encased in the highest quality oil. Our specially developed system guarantees the best product life in the long term.

ADDITIONAL ATTACHMENT

increases the height of the base by 3". condensation drain system, which drains accumulated moisture outside of the turbine vent.



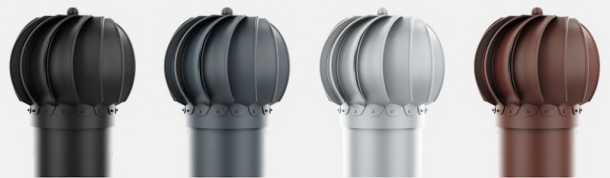
VARIANTS

6" oblong



NRP-6-02 NRP-6-09 NRP-6-10 NRP-6-01

6" round



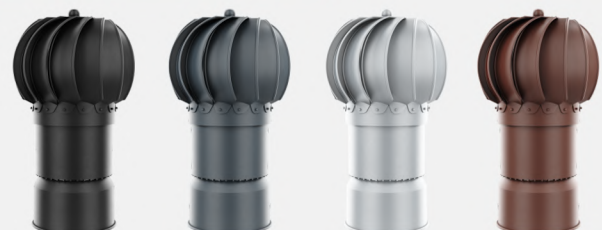
NRK-6-02 NRK-6-09 NRK-6-10 NRK-6-01

6" oblong + attachment



NRP-6-02-MF NRP-6-09-MF NRP-6-10-MF NRP-6-01-MF

6" round + attachment



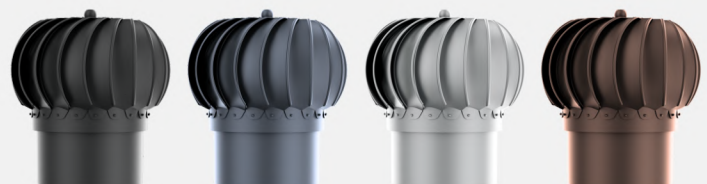
NRK-6-02-MF NRK-6-09-MF NRK-6-10-MF NRK-6-01-MF

8" oblong



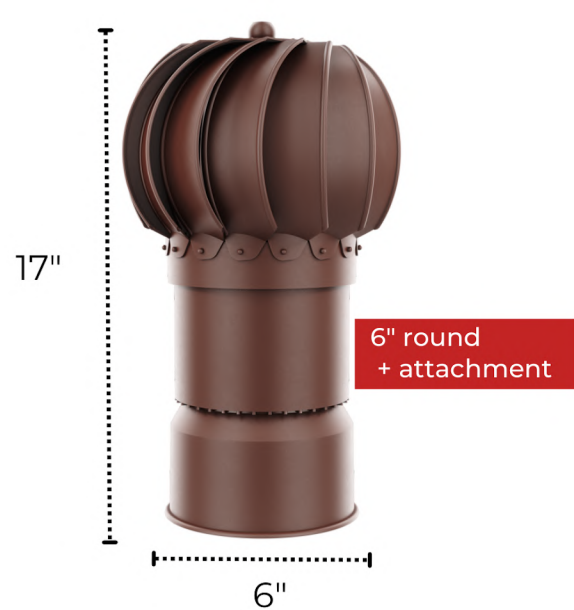
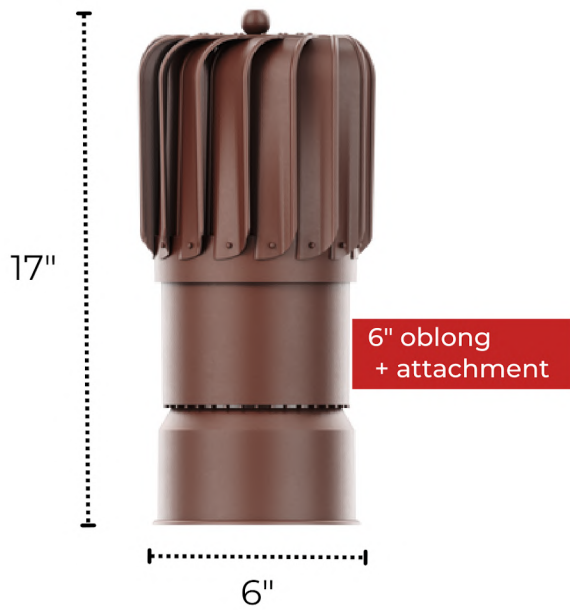
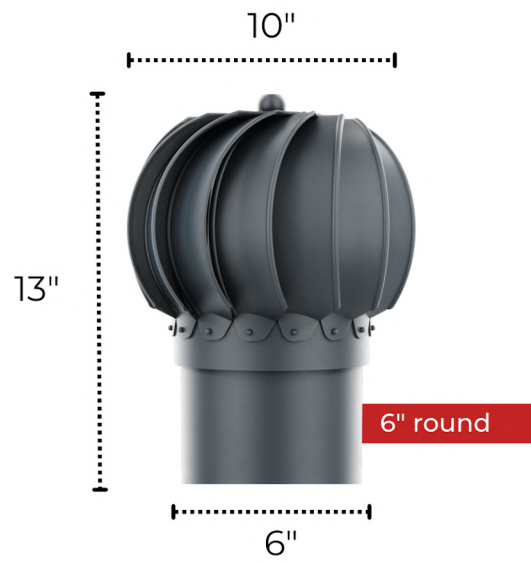
NRP-8-02 NRP-8-09 NRP-8-10 NRP-8-01

8" round



NRK-8-02 NRK-8-09 NRK-8-10 NRK-8-01

TECHNICAL DATA



Our wall-mounted horizontal vent solution fulfills the function of venting and ventilation wherever ventilation cannot be done through the roof. The horizontal termination with the wind turbine significantly improves the air draft throughout the ventilation system, which contributes to the improvement of air circulation in the building and removes moist, used air.

WALLVENT roto features

AIR FLOW TURBINE

the aerodynamically designed profiles of the turbine blades ensure quiet operation and very efficient air draft even in the slightest wind.

BEARINGS

our solution of two encapsulated bearings fill with the highest quality oil ensuring long, quiet and long life operation of the turbine.

MATERIAL

our products are made of high-quality polypropylene with UV stabilizer ensuring color fastness, durability and weather resistance.

LOWER OPENING WITH GRID

the lower opening equipped with a grid with the shape of the body ensures a horizontal draft of air and drains any condensation in the system.

BUBBLE LEVELS

built in bubble levels ensure precise vertical positioning on install.



PASSAGE COVER

it provides an overlay of insulated and sealed pipe penetration through the wall.



VARIANTS



OBLONG

ROUND

COLORS



BROWN

BLACK

GRAPHITE

GREY



SV-NRP-4-01

SV-NRP-4-02

SV-NRP-4-09

SV-NRP-4-10



SV-NRK-4-01

SV-NRK-4-02

SV-NRK-4-09

SV-NRK-4-10

Our wall-mounted horizontal vent solution fulfills the function of venting and ventilation wherever ventilation cannot be done through the roof. The horizontal termination improves air draft throughout the ventilation system, which contributes to improved air circulation in the building and removes moist, used air.

WALLVENT FEATURES

BUBBLE LEVELS

facilitates accurate installation of the horizontal ventilation position.

AIR FLOW RINGS

the developed shape of the rings ensures free air flow and at the same time prevents the ingress of rainwater, leaves and other dirt.

MATERIAL

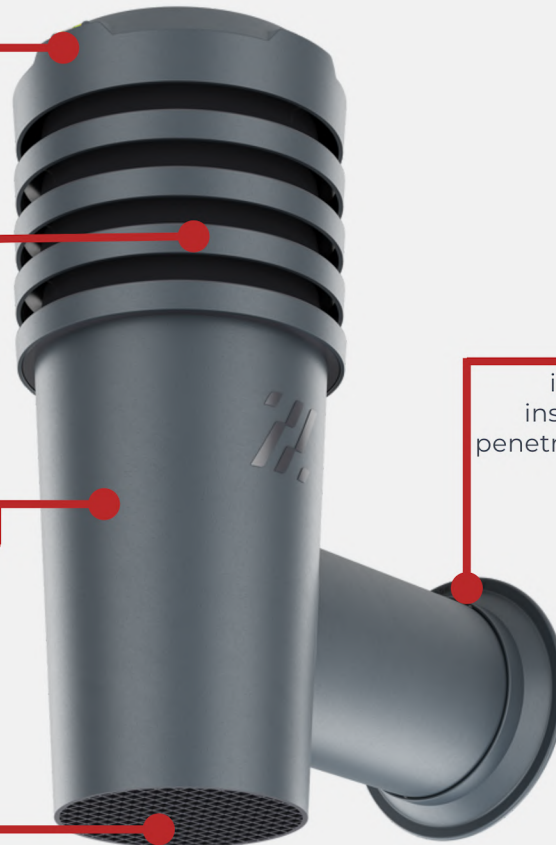
our products are made of high-quality polypropylene with UV stabilizer ensuring color fastness, durability and weather resistance.

LOWER OPENING WITH GRID

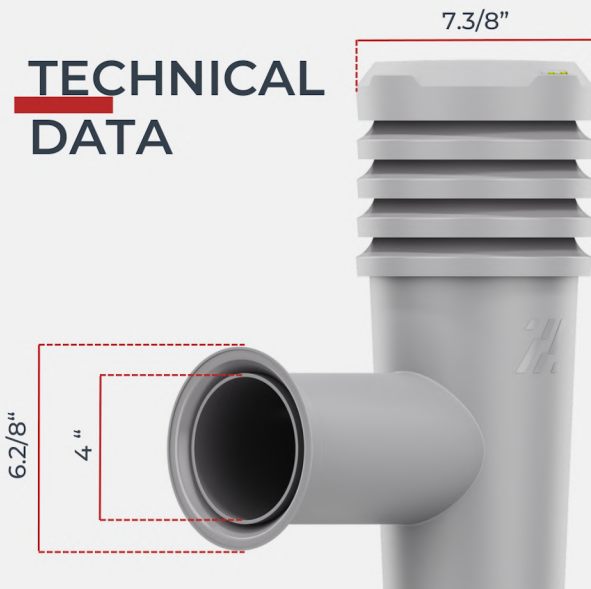
the lower opening equipped with a grid with the shape of the body ensures a horizontal draft of air and drains any condensation in the system.

PASSAGE COVER

it provides an overlay of insulated and sealed pipe penetration through the wall.



TECHNICAL DATA



COLORS



BROWN

BLACK

GRAPHITE

GREY

SV-NKO-4-01

SV-NKO-4-02

SV-NKO-4-09

SV-NKO-4-10



Effective ventilation of the roofing space area

Roof vents ensure ventilation of the roof space between the rafters and battens the roof sheathing

1

DESIGN

the aerodynamically designed head curvature diverts condensation to the sides and in the direction of the vent exhaust. Shape of the cover head allows the biggest opening for air flow thru the vent. Even when the profile of the vent is very low.

2

DURABILITY

it's made of high quality polypropylene, UV resistant. The color doesn't change over the years.

3

ROOFING SPACE VENTILATION

ensures air draft that ventilates the roof structure and thus minimizes temperature impact on the building.



4

PROTECTION GRILLE

protects ventilation opening against birds, small animals, leaves and other debris to get inside ventilated roofing space

5

UNIVERSAL

the product is prepared to install on new or existing roof sheathing as standing seam, cedar or asphalt shingles.

6

ROOFING SPACE VENTILATION

reducing the temperature impact on the roofing material and prevents vapor condensation in the roof structure.

Shingle and slate roofs



Standing seam roofs



WP-1-01-PG brown WP-1-02-PG black WP-1-06-PG clay WP-1-09-PG graphite WP-1-10-PG grey



WP-1-01-PI brown WP-1-02-PI black WP-1-06-PI clay WP-1-09-PI graphite WP-1-10-PI grey

CABLE ROOF PENETRATION

System solution for cable penetration

System solution for PV or solar system cable penetration through the roofing. Fits to shingle, slate and standing seam roofs.



1

TIGHTNESS

EPDM rubber guarantee thightness of penetration of the cables through the roofing. EPDM rubber is UV resist, doesn't crumble, doesn't harden over time.

4

MATERIAL

products made of high quality UV resist polypropylene.

2

COLORS

consistent color with vertical vents, matched to the roofing color.

5

VARIETY OF BASES

available with shingle, slate and standing seam roofs.



3

VERSATILITY

reducing pyramid made of epdm rubber enables cable penetrating of various thicknesses.

6

EASY INSTALLATION

set contains all necessary elements for assembly, except for the screwdriver.

Shingle and slate roofs

Standing seam roofs



WP-1-01-PG
brown

WP-1-02-PG
black

WP-1-06-PG
clay

WP-1-09-PG
graphite

WP-1-10-PG
grey

WP-1-01-PI
brown

WP-1-02-PI
black

WP-1-06-PI
clay

WP-1-09-PI
graphite

WP-1-10-PI
grey

iFLEX - system connection pipe fits every Roofivent vertical vent.

6"

5"



1

COMPATIBILITY

iFLEX pipe is compatible with all Roofivent vertical vents and condensation collector.

2

MULTIPLE REDUCTION

reduction pyramid from 5" to 4.3", 4" and 3" diameter.

3

EASY & TIGHT

our technical solution ensure easy and tight connection of vertical vent and ventilation system.

4

DIMENSIONS

available in two diameters: 5" and 6", length: 20".

5

FLEXIBILITY

pipe flexibility allows free bending without changing the diameter.

6

FLAME RETARDANT

M1 fire resistance class.

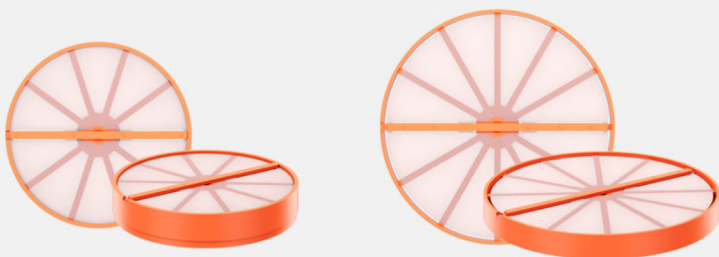


CODE:	KFP-5-20	KFP-5-40	KFP-6-20	KFP-6-40
Diameter:	5"	5"	6"	6"
Length:	20"	40"	20"	40"
Reduction	4.3", 4", 3"	4.3", 4", 3"	6", 5"	6", 5"

Accessories

BACK FLOW VALVE 5" and 6"

it blocks the backinflow of air from the outside through the vertical vent. It's fully compatible to instal in iFLEX pipes.



6" to 5" REDUCTION

enables connection of a 6" vertical vent with a 5" iFLEX pipe



REDUCTION PYRAMID

enables connection of a 5" vertical vent with a 4.3", 4" and 3" pipe



IVENT

CONDENSATION COLLECTOR

NO CONDENSATION IN VENTILATION SYSTEM

Condensation collector minimize the risk of entering condensation to ventilation system.

1

UNIVERSAL

available in two sizes, compatible with Roofivent vertical vents and iFLEX connection pipe.

2

COMPATIBILITY

it is compatible with the installation of an electric fan inside the collector and thereby support mechanical draft support in the ventilation system.

3

EASY INSTALLATION

doesn't require additional tools, click assembly with each vertical vent.



4

SAFETY

it captures condensation, that may form at the dew point in the horizontal ventilation system.

5

CAPACITY

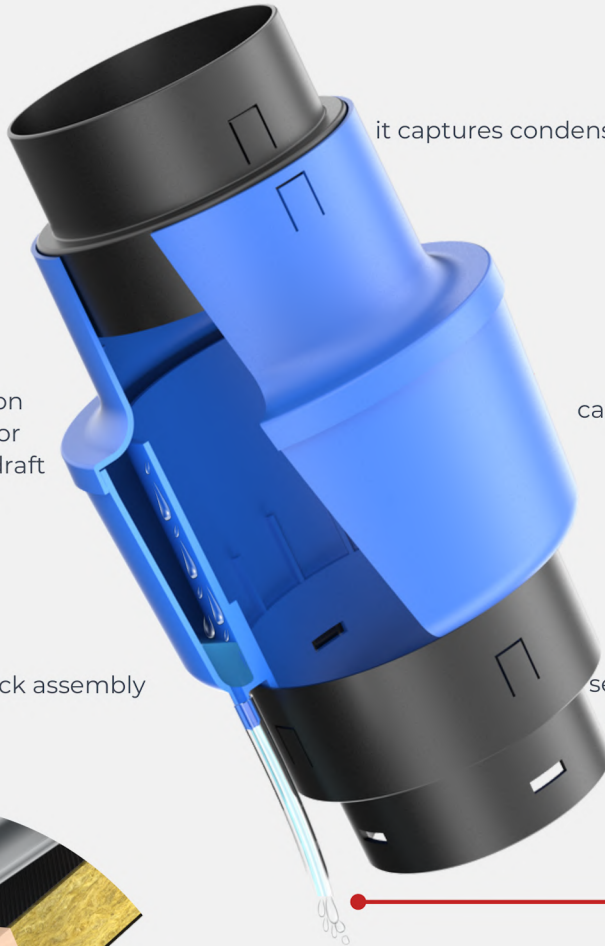
can hold approx. 27 fl oz of condensation

6

PIPE

set contains additional 4' condensation discharge pipe to the indicated place. The pipe can be led, for example, to:

- sewerage
- outside the building
- to the container from which it evaporates



CODE:

SKR-1

SKR-2

Diameter:

5"

6"

LEVELING WEDGES

ROOFVENT LEVELING WEDGES

Wedges can be used wherever precise leveling is needed.

1

SERRATED SURFACE

the serrated surface doesn't allow the wedge to slip off and allow to maintain precise leveling or straightening.

2

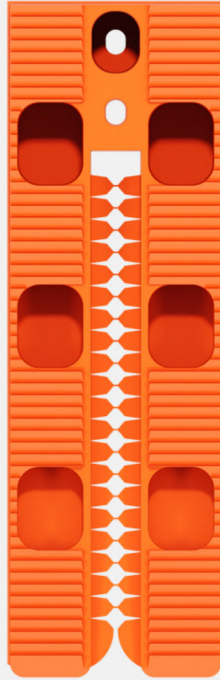
SHAPE

the cut in the center of the wedge enables leveling of elements already partially screwed.

3

COLORS

each wedge size is made in a different color. This makes it easier to find the right dimension.



4

PERMANENT LEVELING

the wedge doesn't deform over time, doesn't absorb moisture.

5

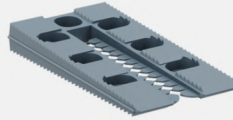
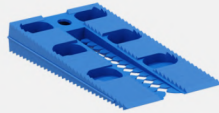
MATERIAL

are made of high-quality PP material, which makes the product resistant to compression up to 880 lbs, resistant to weather conditions.

6

VARIOUS OF DIMENSIONS

four sizes of wedges. The choice of dimension depends on the leveling distance.



CODE:

LW-4-L

LW-3-L

LW-2-L

LW-1-L

Overall Size:
(H x W x L)

$\frac{3}{8}$ " x $1 \frac{3}{8}$ " x $2 \frac{3}{4}$ "

$\frac{3}{8}$ " x $1 \frac{1}{2}$ " x 3"

$\frac{1}{6}$ " x $1 \frac{3}{8}$ " x $3 \frac{3}{4}$ "

$\frac{7}{8}$ " x $1 \frac{3}{4}$ " x $5 \frac{3}{8}$ "

Packing:

250 pcs

250 pcs

250 pcs

250 pcs



CODE:

LW-1-2-MIX-L

LW-3-4-MIX-L

Specification

orange - 30 pcs
white - 50 pcs

graphite - 100 pcs
blue - 130 pcs

Packing:

80 pcs

230 pcs

SHIMS

SHIMS WITH OPENING FOR SCREW

Shims are used to compensate for various structures spacings: for leveling battens for leveling joists for aligning and straightening building structures.

1

SIZES

available in several heights that can be freely combined depending on needs:
 $\frac{3}{16}$ ", $\frac{1}{8}$ ", $\frac{3}{16}$ ", $\frac{1}{4}$ ", $\frac{5}{16}$ ", $\frac{3}{8}$ ", $\frac{9}{16}$ ".

2

ONE COLOR – ONE SIZE

each shim size is made in a different color. It makes simple to find the right thickness.

3

PACKING

available in boxes of 50 pcs same dimension or multipacks of mixed sizes in boxes.

4

MOUNTING HOLES

each shim have 3 mounting holes, for connectors of different diameters ($\frac{1}{8}$ ", $\frac{5}{16}$ ", $\frac{3}{8}$ ")

5

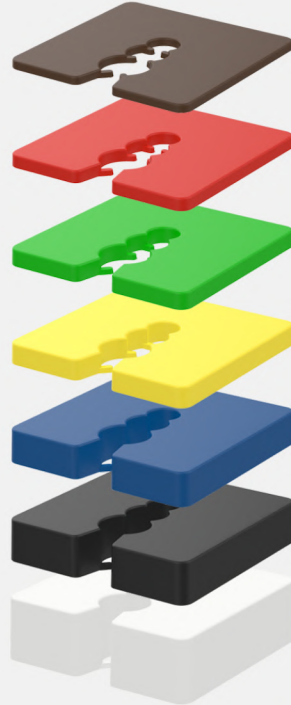
FLEXIBILITY

wide variety of dimensions allows flexibility to stabilize and secure an equal distance in structure

6

DURABLE

made of high quality polypropylene, with high compressive strength



CODE:	PD-02	PD-03	PD-04	PD-05	PD-08	PD-10	PD-15
Size	2" x 2" x 1/16"	2" x 2" x 1/8"	2" x 2" x 3/16"	2" x 2" x 1/4"	2" x 2" x 5/16"	2" x 2" x 3/8"	2" x 2" x 9/16"
Packing:	50 pcs	50 pcs	50 pcs	50 pcs	50 pcs	50 pcs	50 pcs



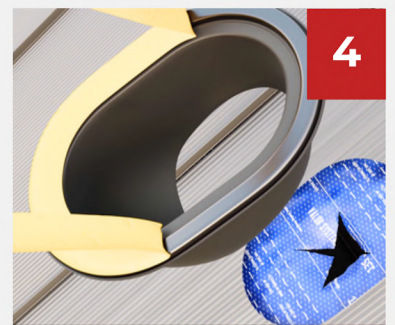
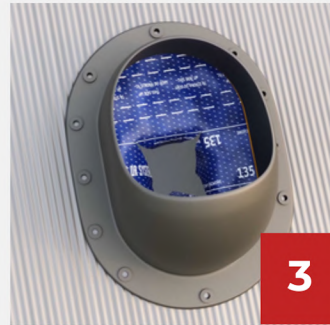
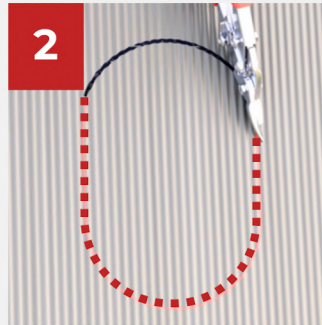
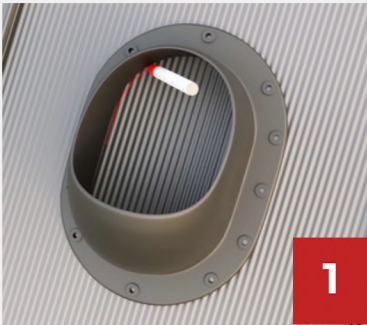
CODE:	PD-MIX-L	PD-02-05-MIX-L	PD-08-15-MIX-L
Specification	40 pcs x all sizes	brown - 100 pcs red - 100 pcs green - 100 pcs yellow - 100 pcs	blue - 50 pcs black - 50 pcs white - 50 pcs
Packing:	280 pcs	400 pcs	150 pcs

INSTALLATION INSTRUCTIONS

For the product line - IVENT ECO, IVENT ROTO, IVENT FLOW on Standing seam and Metal roofs.

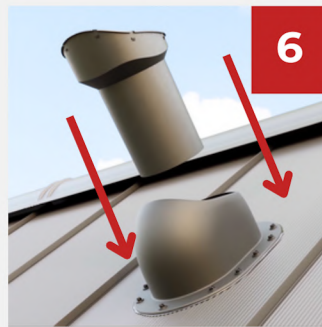
Do not use these products for fireplace chimney and stovepipe.

1. Mark the hole in the cover by drawing it on the cover from the inner hole of the base (1).
2. Cut out the traced hole (2). When cutting, remember to use the appropriate tools, adapted to the material being cut.



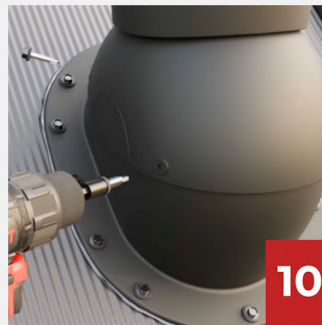
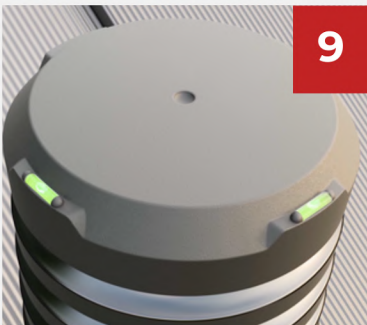
3. Clean and degrease the surface on which the butyl gasket will be fixed.

4. Tear off the tape securing the butyl seal (4), then place the base around the cut hole and press it down. Fasten with farmer screws in the following order - top screw, bottom screw and sides (5)



5. Insert the exhaust pipe into the base and latch (6, 7).

6. Put the vertical vent on the base (8), adjust it vertically (9) and stabilize it by screwing the base with the vent with screws -4 pcs, 2 for each side (10).



7. The recommended installation temperature is +41 to +104 °F.

8. Do not hit the plastic base with a hammer, do not over tighten it. This may damage the product.

LIFETIME GUARANTEE

Roofivent LLC give lifetime guarantee on functionality of these products. Guarantee doesn't include replacement due to destructive storms. In case of any problem with Roofivent products, contact us: office@roofivent.com.

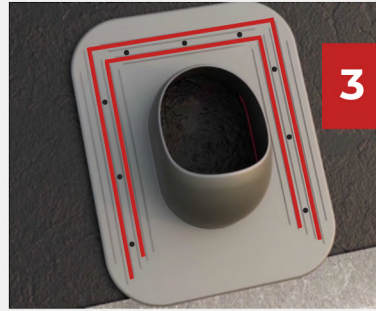


INSTALLATION INSTRUCTIONS

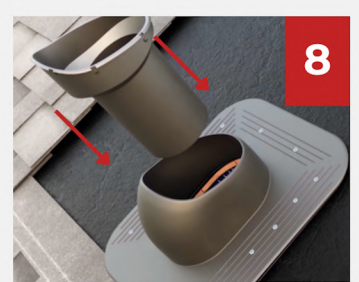
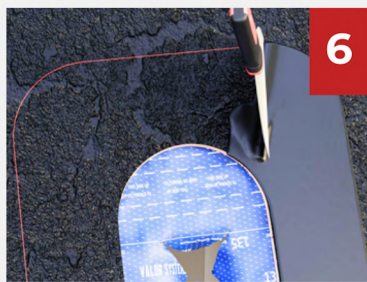
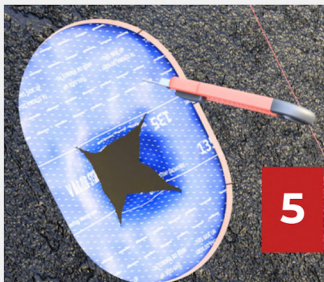
For the product line - IVENT ECO, IVENT ROTO, IVENT FLOW on Shingle or Slate roofs.

Do not use these products for fireplace chimney and stovepipe.

1. Place the base where it is to be installed. Mark the hole in the cover by drawing it from inside the vent base (pic.1)
2. Drill several nail holes in to the third row of the flat part of the base (pic. 3)



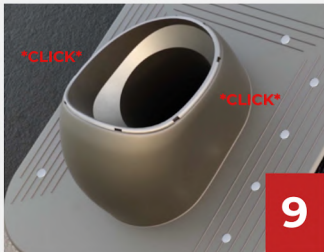
3. Cut out the hole marked on the roof (pic. 4, 5). When cutting, remember to use the appropriate tools for the material being cut.



4. Clean the surface around the opening and then apply sealing (roofing sealant - not included) to the prepared surface (pic. 6). Evenly press the base and then fasten with roofing nails through the predrilled holes (pic. 7).

5. Insert the exhaust pipe into the base and latch it (pic. 8, 9).

6. Cover the flat part of the base with bitumen sealant (pic. 10) and replace the shingles/roofing felt, that has been pre-cut around the protruding element of the base (pic. 11).



7. Place the vertical vent on the screwed base (pic.12).

8. Level it vertically (pic. 13) and connect it to the base with screws - 4 pcs (pic. 14).



The recommended installation temperature is between +41 and +104°F. Do not strike the plastic base with a hammer. This may damage the product.

LIFETIME GUARANTEE

Roofivent LLC give lifetime guarantee on functionality of these products. Guarantee doesn't include replacement due to destructive storms. In case of any problem with Roofivent products, contact us: office@roofivent.com.





ROOFIVENT LLC.
8330 S Madison St, suite 70,
Burr Ridge,
IL 60527, US
Cell: +1 (708) 618 9525

v.1.0